

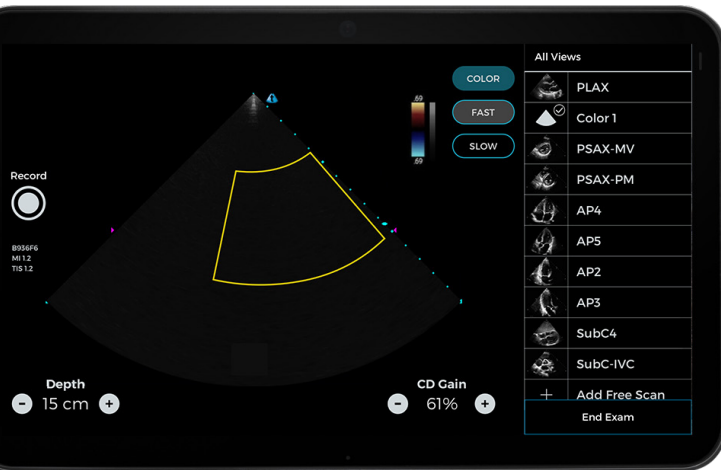
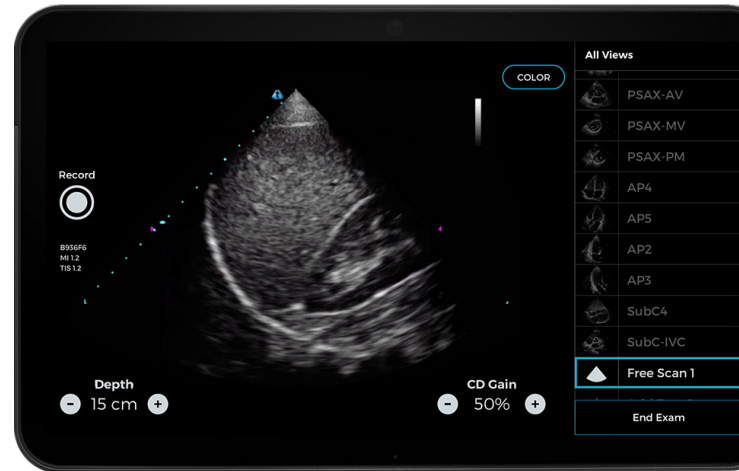
Welcome to Caption AI - Version 1.1.1

Congratulations on upgrading Caption AI! The Caption Health team is constantly working to build out new capabilities and algorithms, refine features, and make Caption AI easier to use and integrate into your workflow.

Here's what's new in this version:

Free Scan Mode

Easily perform non-cardiac scans (such as lung and abdominal exams) within the Caption AI software.*

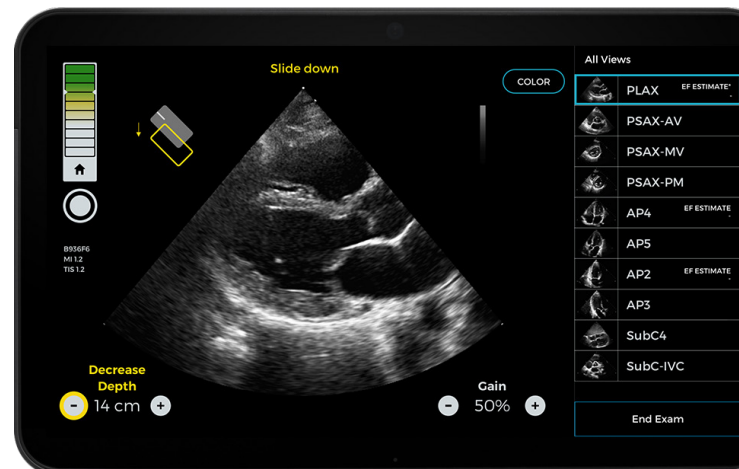


Depth Guidance

Depth guidance now appears overlaid onto the depth buttons to improve readability.

Color Doppler

Easily turn on Color Doppler without leaving the Caption AI interface.*



Export Capabilities

You can now export multiple studies in the background while scanning.

Easy Start Up

The Terason uSmart software now opens automatically in the background when starting Caption AI.

Enhanced Performance

Additional improvements save battery life and enhance software stability.

Other Tips

- Make sure the phased array probe is plugged into the machine when starting Caption AI.
- The on-screen keyboard will automatically appear when entering patient and provider information. However, the on-screen keyboard will not appear when creating a custom preset. Ensure the wireless keyboard is connected to the system to create custom presets.
- When a clip is being Auto-Captured or manually recorded, do not press the Save Best Clip button or Color button.
- In this version, there is an unresolved issue with adjusting the Color Doppler Gain. We recommend scanning with the default Color Doppler Gain setting, which has been optimized for cardiac flow. A Slow Flow option is also available to the user.
- Note that stopping an ongoing export will pause the software for 15-20 seconds.
- Refer to the **Quick Reference Guide** and other documents provided.

Version History

Version	Description	Date
1.1.0	Initial release	9/15/2020
1.1.1	Minor bug fixes and enhancements	10/20/2020

Questions? We're here to help.

URGENT

Call (855) 506-4357 *8am - 8pm ET (US)*

NON-URGENT

Text (855) 506-4357 *Preferred - 24/7 support*

Email support@captionhealth.com